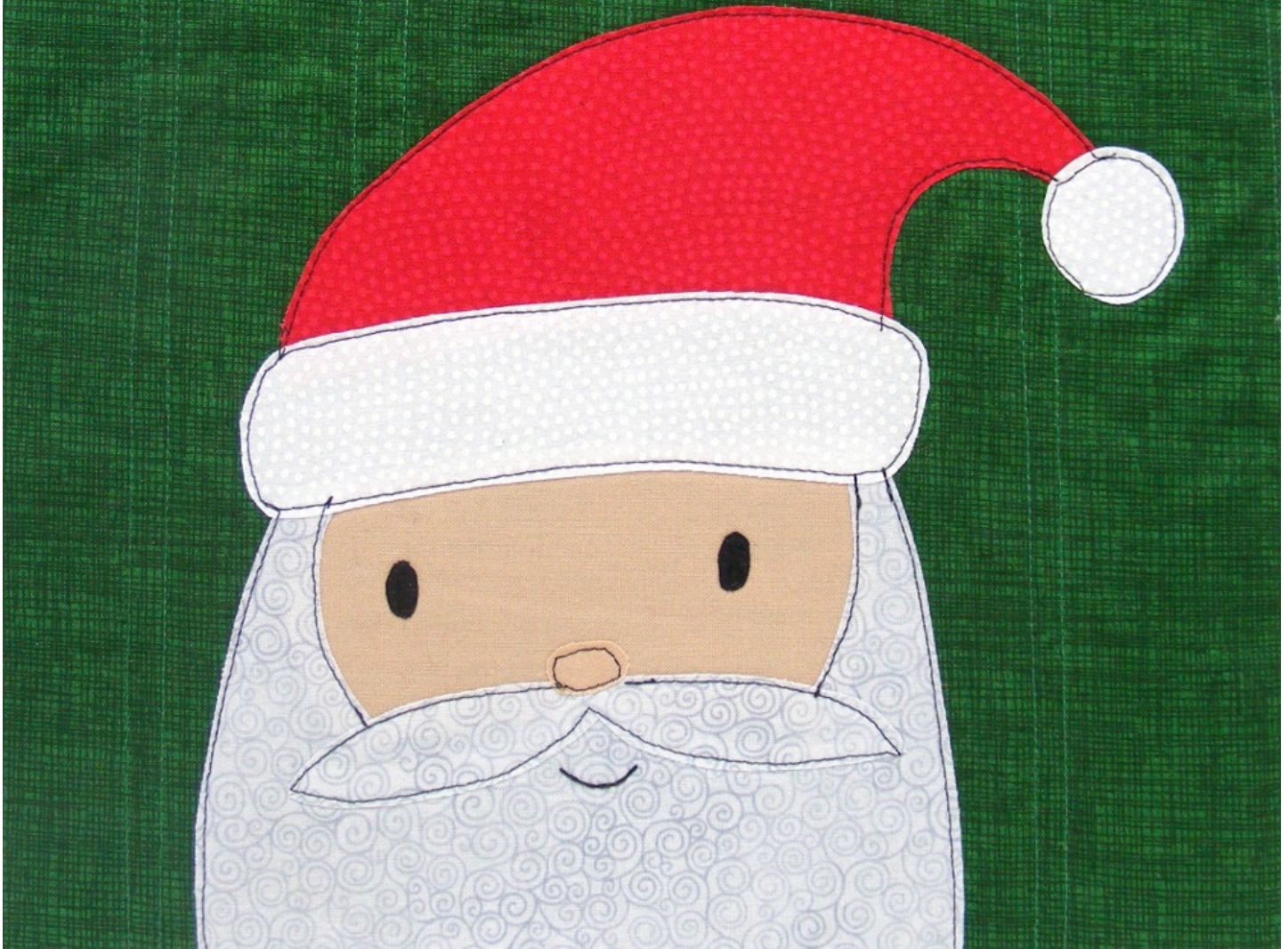


# Santa

applique pattern



Make a jolly Santa block! It's quick and easy. Put him on the front of a pillow, on a T-shirt, on a tote bag, a gift bag, a mug rug, a wall hanging. . . he'll go anywhere you want him!

Happy sewing!

Best,  
Wendi

## Instructions

Throughout the pattern you'll see some phrases in the instructions in **purple**. That means they link to free online video tutorials showing you exactly how to do that step of the project. If you're viewing this on your computer or tablet, just click the link. If you're working from a printout of the pattern, go to [www.shinyhappyworld.com](http://www.shinyhappyworld.com). Click on the Quilting Lessons tab at the top of the page and you'll find all the quilting tutorial links in one handy place. You can totally do this!

If you just took your first sewing machine out of the box, you might want a little extra help. You can find lots of very beginner tutorials at Shiny Happy World. The ones you might find most helpful for this project are. . .

- [How to sew a straight line and turn corners](#)
- [How to sew curves](#) (with tips for handling tight curves)
- [How to use rotary cutting tools](#).

## Materials You'll Need

- Fabric - you'll need a 10 1/2" square for the background, scraps for everything else
- Thread - I used black for outlining and green for quilting
- Batting - I use Warm & Natural 100% cotton batting for all my quilts and **I highly recommend it**. If you're doing Quilt As You Go, you MUST use 100% cotton batting.
- Depending on the applique technique you choose, you'll also need an erasable pen, freezer paper or fusible adhesive. Those supplies are detailed where I talk about the different techniques.

## Fabric

I always have a lot of people ask exactly what fabrics I use in a project, so here's a list of the fabrics used here. . .

- The background is [Sketch in emerald](#).
- The beard is [Jazz in grey](#).
- The hat is [Dream in red and white](#).
- The face is [Soho Solid in camel](#).
- The eyes are [Soho Solid in black](#).

## Applique Techniques

### Needle Turn Applique

It's the slowest applique technique, but beautiful and portable so this is a great choice if you like to carry hand work around with you. [Watch how to do it in this video.](#)

For needle turn you'll be tracing each pattern piece onto the right side of your fabric. You'll need an erasable pen. Use the regular orientation pattern page.

### Applique with Fusible Adhesive

This is the technique that I used for the sample you see on the cover. I love it!

It's the easiest and fastest applique technique. I've avoided it in the past because the results can be stiff and the additional sewing needed around the edges of the pieces can be clunky, but I just discovered two products I love that fix these problems. [Read the details about them here.](#)

[Watch this video to learn how to applique with fusible adhesive.](#)

If you want a super soft quilt use [SoftFuse Premium Applique Sheets](#). It's VERY soft, but requires stitching around the edges. After washing you'll have soft frayed edges if you use straight stitch for your stitching. The fraying will be minimized if you use a zigzag stitch instead.

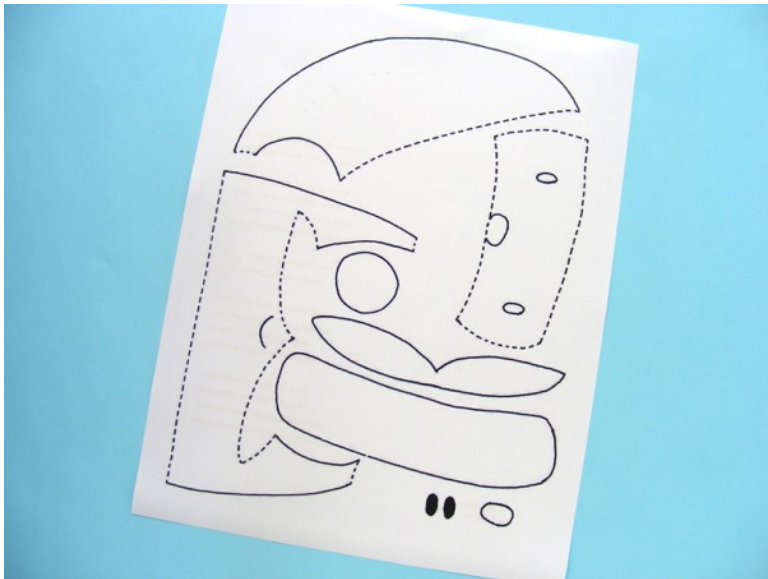
If you want a super easy quilt that's still pretty darn soft, use [Ink Jet Printable Fusible Web](#). It's what I use in all my quilts. No tracing your patterns! Use the reversed and exploded pattern page - it's been optimized for use with fusible adhesive.

### Machine Applique

For this technique you'll use freezer paper. You can use regular freezer paper from the grocery store or [Printable Freezer Paper Sheets](#) for No Tracing.

[Watch these videos for instructions in the freezer paper technique.](#) Use the reversed and exploded pattern page.

**I used Applique with Fusible Adhesive for this project, so the instructions will show that technique in more detail.**

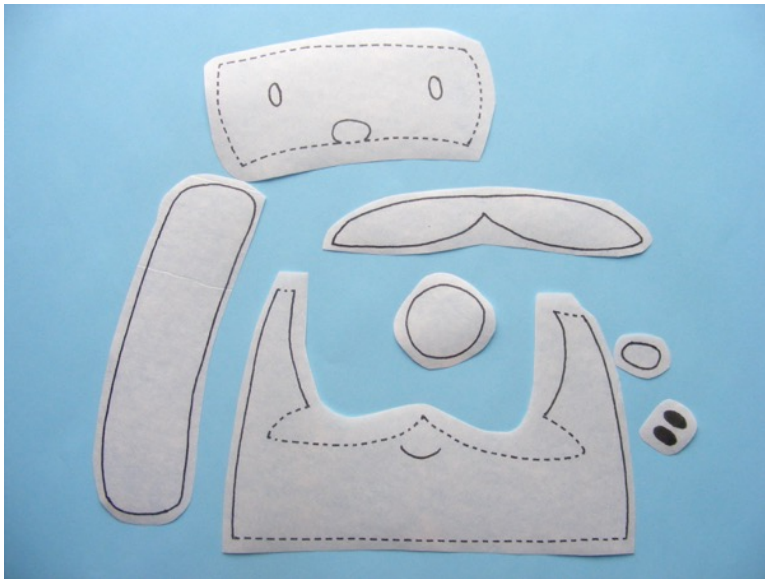


### Step 1

Trace the pattern onto the paper side of the fusible adhesive.

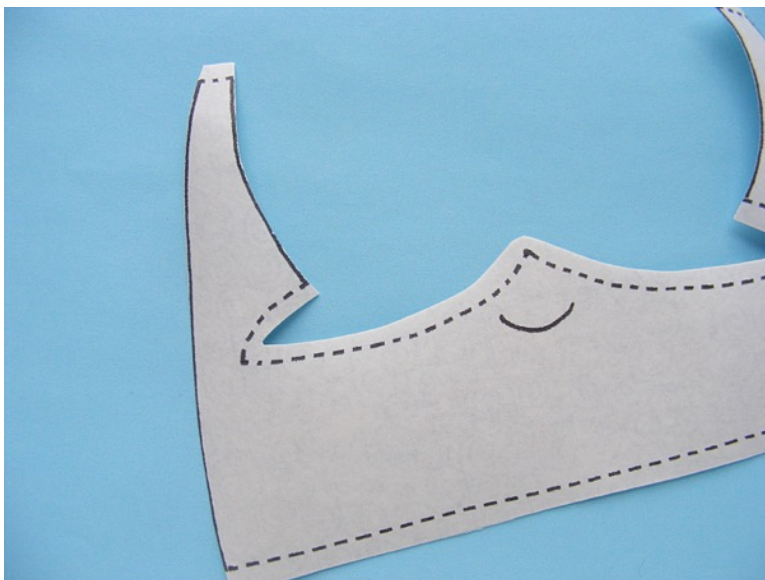
I use [this printable fusible adhesive](#) so I just printed out the page. No tracing!

The image has already been reversed, so just trace or print.



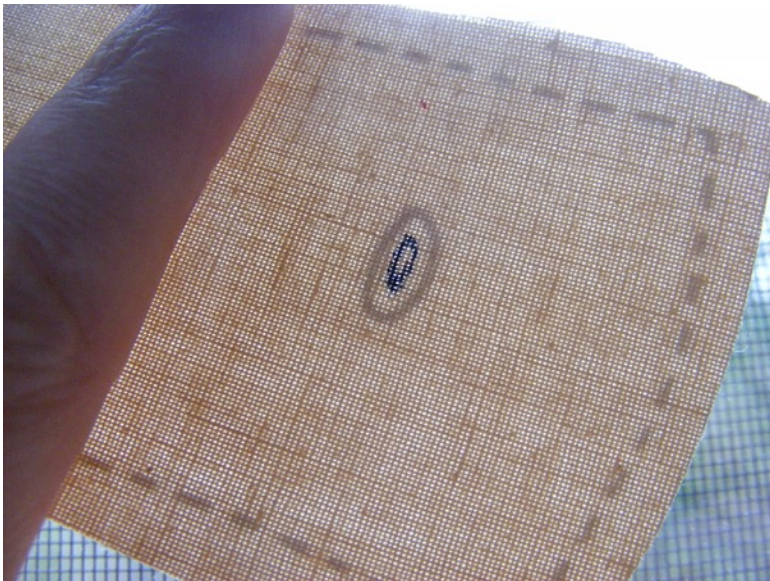
### Step 2

Rough cut around each shape. Leave a little bit extra all the way around - a little extra extra (at least 1/4 inch) where there's a dotted line.



### Step 3

Fuse each pattern piece to the wrong side of the fabric. Cut around each piece. Cut directly on the solid lines. Leave a little seam allowance past the dotted lines.



## Step 4

Trace the eyes, nose and mouth onto the right side of the fabric. If you hold the piece up to a window the light will make the lines very visible, even on dark fabric.

I mark a little smaller than the actual pieces will be - that way I don't have to get the placement *exactly* right.

## Step 5

If you're doing Quilt As You Go you can quilt your block before adding the applique. So easy! Layer the block with a piece of 100% cotton batting. Quilt any pattern you like! [Find all the Quilt As You Go tutorials here.](#)

If you'll do the quilting later, simply skip this step.



## Step 6

Peel off the paper backing and arrange the pieces on a background block.

Remember - all the dotted lines indicate where pieces tuck behind other pieces.

Fuse the pieces in place.

I placed the beard first, then tucked the face behind the beard and layered the mustache and nose over it. Then I placed the hat band over the top of the face, tucked the hat behind the top of it, and popped on the pom-pom.

## Step 7

Stitch around all the pieces. I just did simple straight line stitching in black thread. I love the cartoony effect! I stitched the mouth by hand with 2 strands of black embroidery thread, but you could do it by machine with no problem.



Finished!

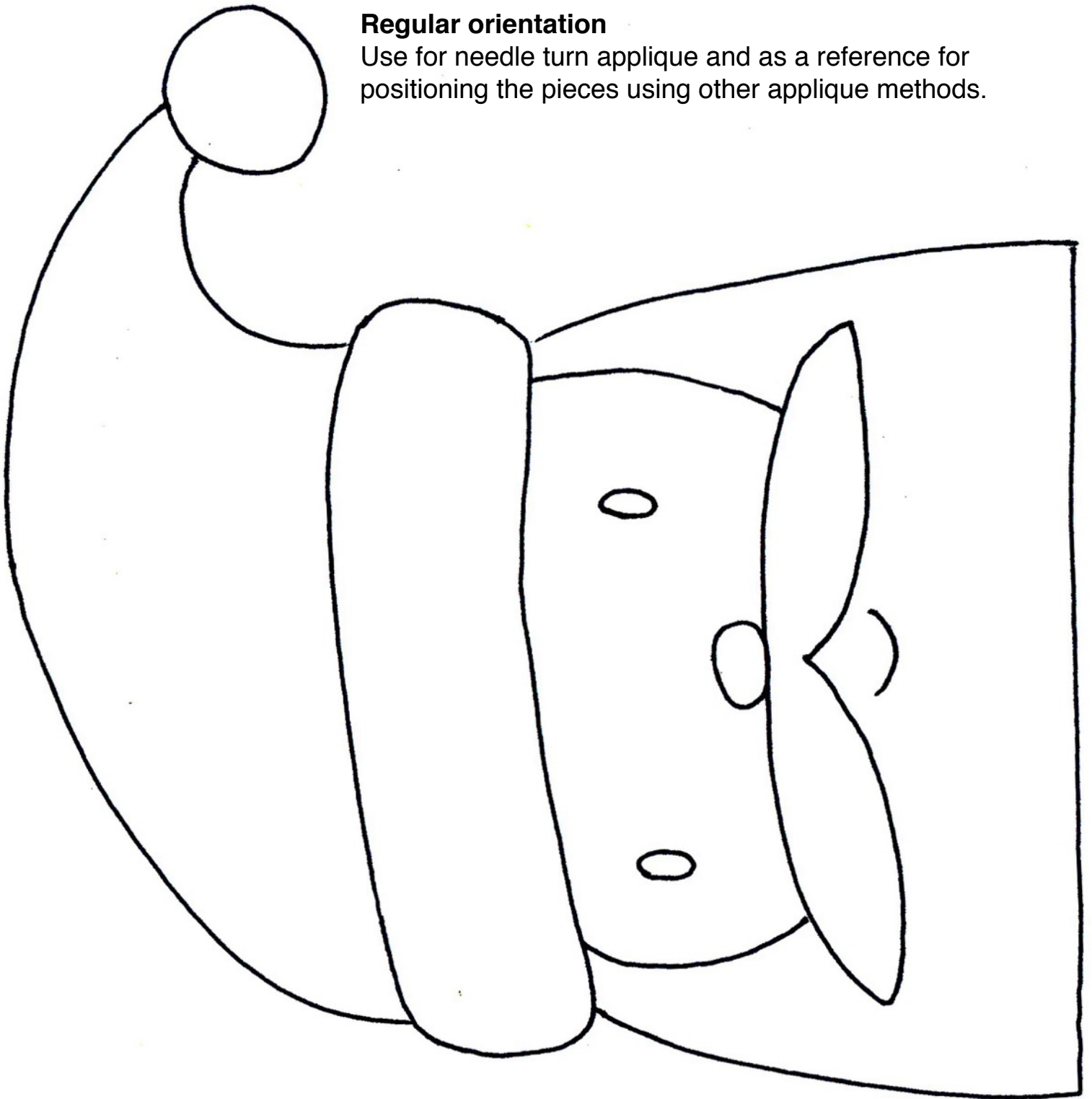
He's a jolly old elf! :-)

### Did you have fun?

I hope so! Please visit [Shiny Happy World](http://Shiny Happy World) for more patterns, plus lots of free projects and helpful tutorials.

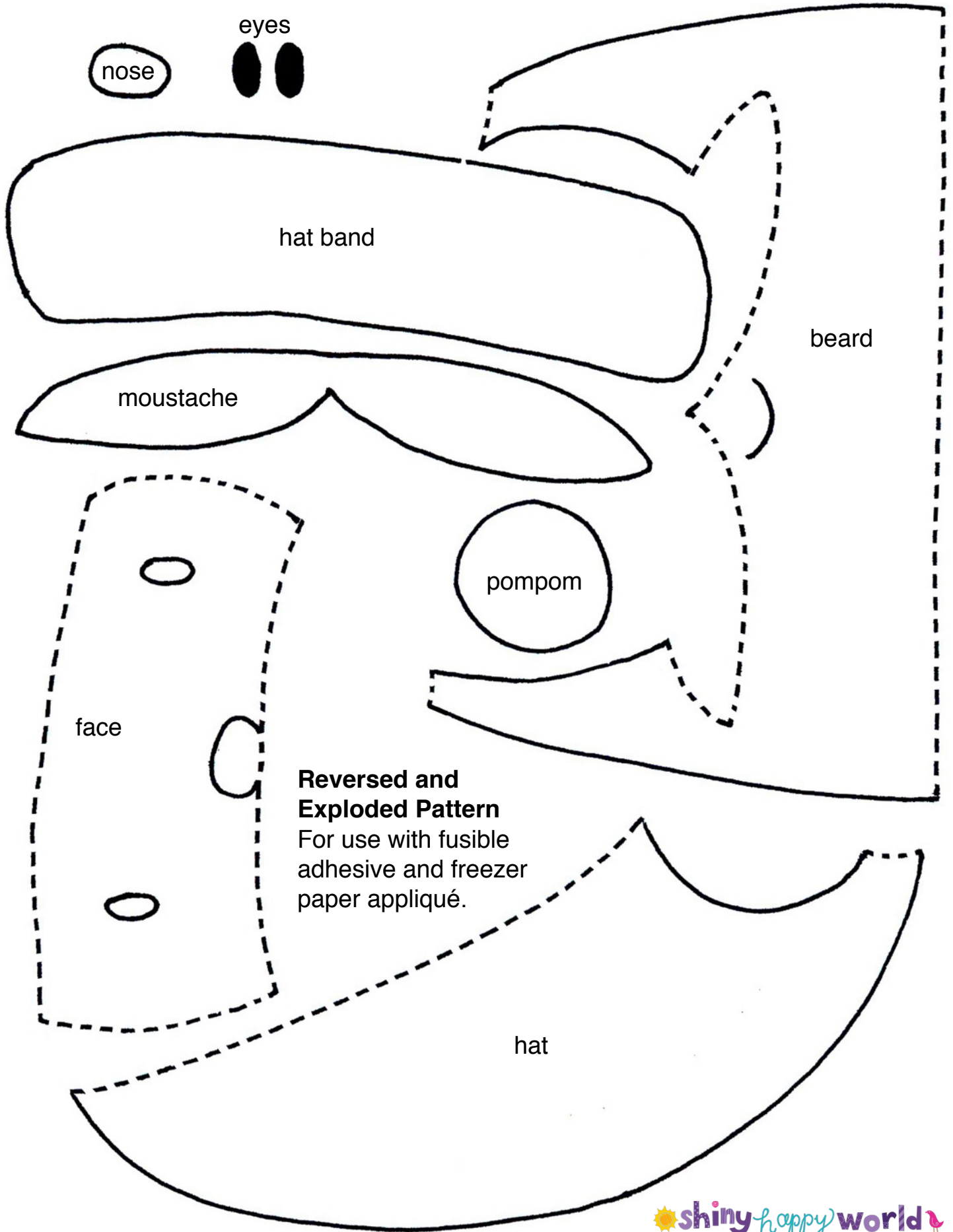
### Regular orientation

Use for needle turn applique and as a reference for positioning the pieces using other applique methods.



© Wendi Gratz 2014

This pattern is for personal use only and is not available for commercial resale. That means you **may not** copy and sell or digitally distribute the pattern. You **may**, however, sell items you make with the pattern - as long as you are making them yourself. :-)



eyes

nose

hat band

moustache

beard

pompom

face

**Reversed and Exploded Pattern**  
For use with fusible adhesive and freezer paper appliqué.

hat