

Dear Stella fabrics are available online and in sewing and quilting shops worldwide. Ask for it at your local quilt shop!



Finished size: Approximately 36" x 27"

# Sloth Lovie

## pattern

DESIGNED BY WENDI GRATZ  
www.shinyhappyworld.com  
Featured fabrics: Steam Texture by Rae Ritchie,  
Positive, Polka Dots, Net, and Hearts

Can you stand the cuteness? Simple stitching and minimal stuffing pulls this project together in a flash. Select three of your fav fabrics — we couldn't stop at just one — and add a dash of hook-and-loop tape to help him hang. Sew up a sweet sloth (or several!) for someone you love!






This pattern is owned and licensed by Dear Stella for personal use only and should not be reproduced for sale to any third party.

[www.dearstelladesign.com](http://www.dearstelladesign.com)

# SLOTH LOVIE PATTERN

## Materials and Cutting

Fabric*		Yardage	Cutting
	Positive Stella-592 Atlas	2 yards	Before cutting, assemble the Sloth Body template as indicated on page 3. Cut: 1 and 1 reversed Sloth Body
	Positive Stella-592 Ink	1/4 yard	Cut: 24 rectangles, 2" x 3 1/4", for the Toes 4 rectangles, 4 1/4" x 3", for the Eye Patches
	Positive Stella-592 Smoke	One fat eighth (11" x 18" rectangle)	Using the template on page 4, cut: 1 and 1 reversed Sloth Face.
Other			
	Black Felt	One 3" x 3" square	Using the patterns on page 12, trace 2 Eye and 1 Nose templates onto the dull side of freezer paper. Place the freezer paper shiny side down on the black felt, and press with a warm iron to adhere the template to the felt. Cut the 2 Eyes and 1 Nose from the felt. Remove the templates from the cut pieces.
4" of 1"-wide hook-and-loop tape			
	Polyester fiberfill	2 ounces (or more, depending on brand)	
Glue stick			
Freezer Paper			

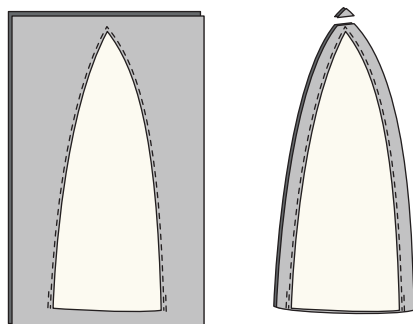
\*Substitute light, medium and dark prints from your favorite Dear Stella collection, if you prefer.

**Note:** All seam allowances are 1/4" unless otherwise specified. Templates include seam allowances where necessary. Press all seam allowances open.

### Prepare the Toes

① Trace the Toe pattern onto the dull side of freezer paper. Cut the template out, trimming directly on the traced line.

② Layer two 2" x 3 1/4" rectangles right sides together, aligning all edges.



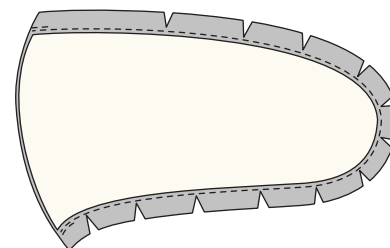
Place the template shiny side down on the wrong side of one rectangle, and press with a warm iron to adhere the freezer paper to the fabric. Backstitching at the start and stop, sew around the two long edges of the toe, stitching close to the template edge. Trim the excess fabric, leaving a 1/4" seam allowance along the sewn edges, and trimming the base of the toe flush with the template edge. Trim the seam allowance at the toe tip to reduce bulk.

③ Remove the template and turn the toe right side out. Use a turning tool to form a point at the toe tip. Stuff the toe slightly more than half full with fiberfill. Repeat to make a total of twelve toes.

### Make the Face

① Trace the Eye Patch pattern onto the dull side of freezer paper. Cut the template out, trimming directly on the traced line.

② Layer two 4 1/4" x 3" Eye Patch rectangles right sides together, aligning all edges. Place the template shiny side down on the wrong side of one rectangle, and press with a warm iron to adhere the freezer paper to the fabric. Backstitching at the start and stop, sew around the long edges of the Eye Patch, leaving the short edge unsewn, and stitching close to the template edge. Trim the excess fabric, leaving a 1/4" seam allowance along the sewn edges, and trimming the short edge of the Eye Patch flush with the template edge. Clip the curves. Turn



This pattern is owned and licensed by Dear Stella for personal use only and should not be reproduced for sale to any third party.

[www.dearstelladesign.com](http://www.dearstelladesign.com)

PAGE 2 OF 12



# SLOTH LOVIE PATTERN

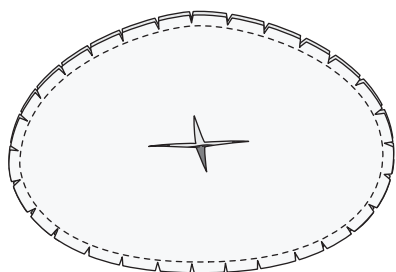
the Eye Patch right side out, and use a turning tool to smooth the curves. Press the turned edges. Repeat to make a total of two Eye Patches.

③ Using the Face template as a placement guide, position the Eye Patches, Eyes, and Nose on the right side of one Sloth Face. Temporarily glue the pieces in place. Trace the mouth onto the Face, using a removable marker. Use matching thread to straight stitch around the outer edges of the Eye Patches, Eyes and Nose. Use black thread to machine stitch the mouth, going over the line 2 or 3 times to make a clear smile. (If you prefer, hand embroider the mouth instead of machine stitching.)



④ Place the second Face piece right sides together with the sewn Face, matching outer edges. Sew completely around the outer edge of the Face. Clip the curves.

Pull the center of the second Face piece slightly away from the sewn Face. *Cutting through the second Face only*, cut an X in the center of the Face.



Turn the Face right side out through the cut opening. Use a turning tool to smooth the curved edges. Stuff the Face with a thin layer of fiberfill.

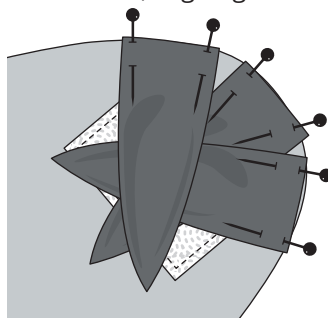
⑤ Using the Sloth Body template as a placement guide, position the stuffed

Face right side up on the right side of one Body. Pin, then stitch the Face in place, sewing close to the outer edges.

## Assemble the Sloth

① Cut the hook-and-loop tape into 2" sections. Referring to the Sloth Body pattern for placement, position the hook tape on one paw, and the loop tape on the facing paw. Stitch around the outer edge of each tape section. Repeat to add hook-and-loop tape to the remaining two paws.

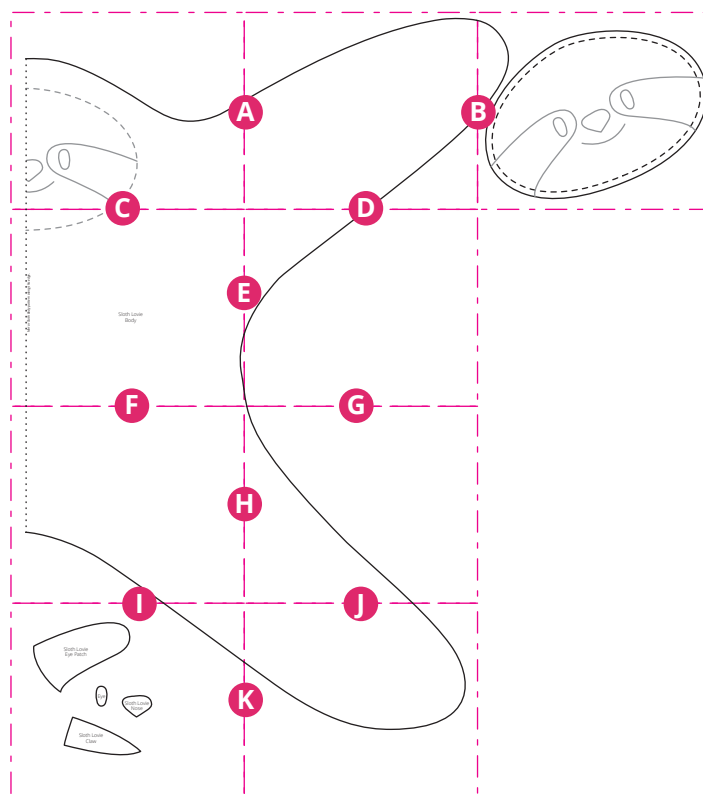
② Position three toes on the right side of each paw as shown, aligning the unsewn edge of the toes with the raw edge of the paw. Pin the toes in place.



③ Place the remaining Body piece right side together with the first, aligning all outer edges. Pin the Body pieces together, sandwiching the toes between the Body pieces. Sew around the perimeter of the body, making sure to catch the unsewn edges of each toe in the seam, and leaving a 5" to 6" opening along the straightest part of one leg.

④ Clip the curves. Turn the sloth right side out through the opening. Use a turning tool to smooth the seam. Press the outer edges, turning the seam allowance to the inside at the opening. Hand stitch the opening closed.

## PATTERN KEY



Follow the pattern key at left to assemble the Sloth Lovie body pattern, matching and taping sections together along the dot-dash lines, as indicated.

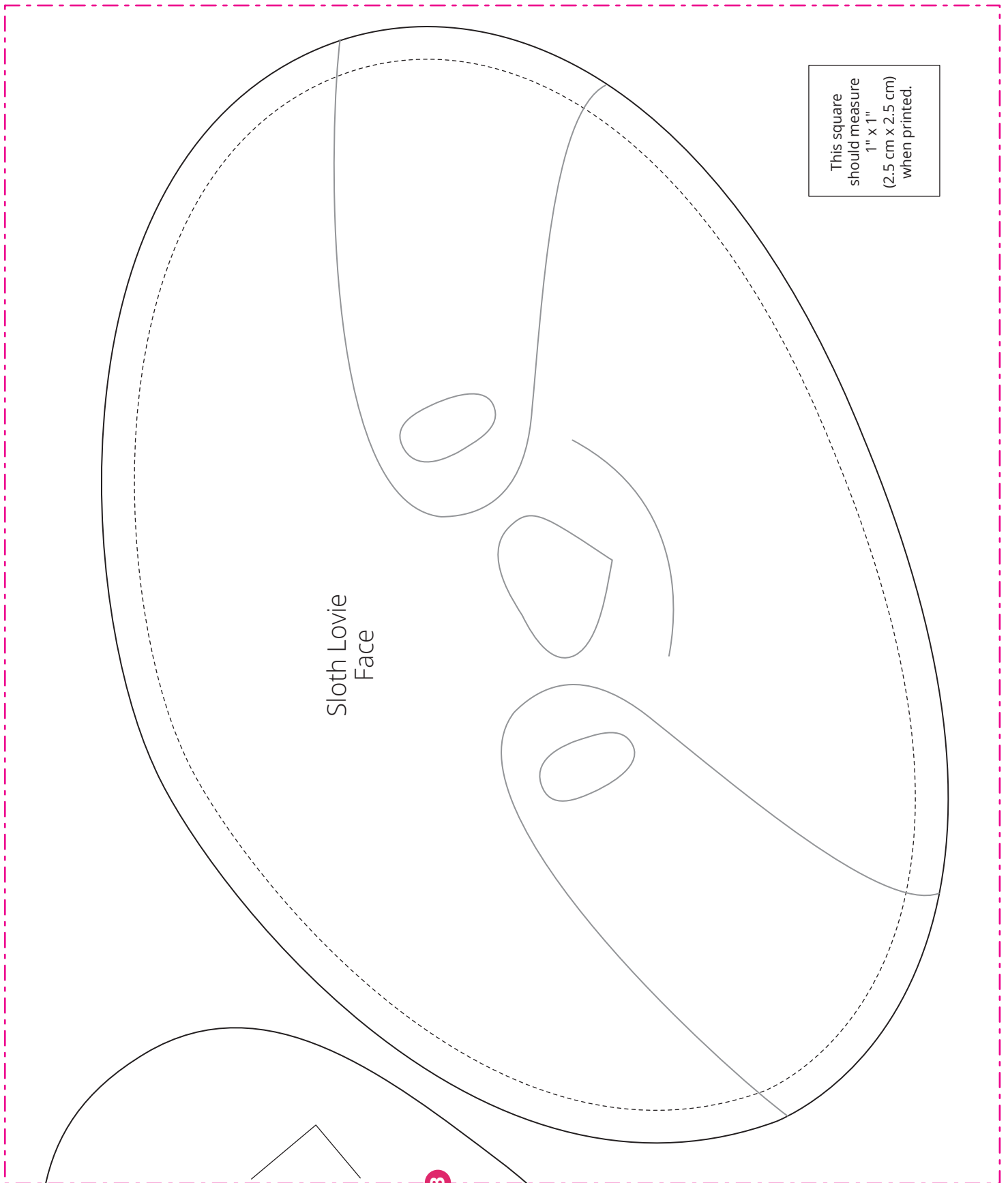


This pattern is owned and licensed by Dear Stella for personal use only and should not be reproduced for sale to any third party.

[www.dearstelladesign.com](http://www.dearstelladesign.com)

PAGE 3 OF 12

# SLOTH LOVIE PATTERN



This square  
should measure  
1" x 1"  
(2.5 cm x 2.5 cm)  
when printed.

Sloth Lovie  
Face

B

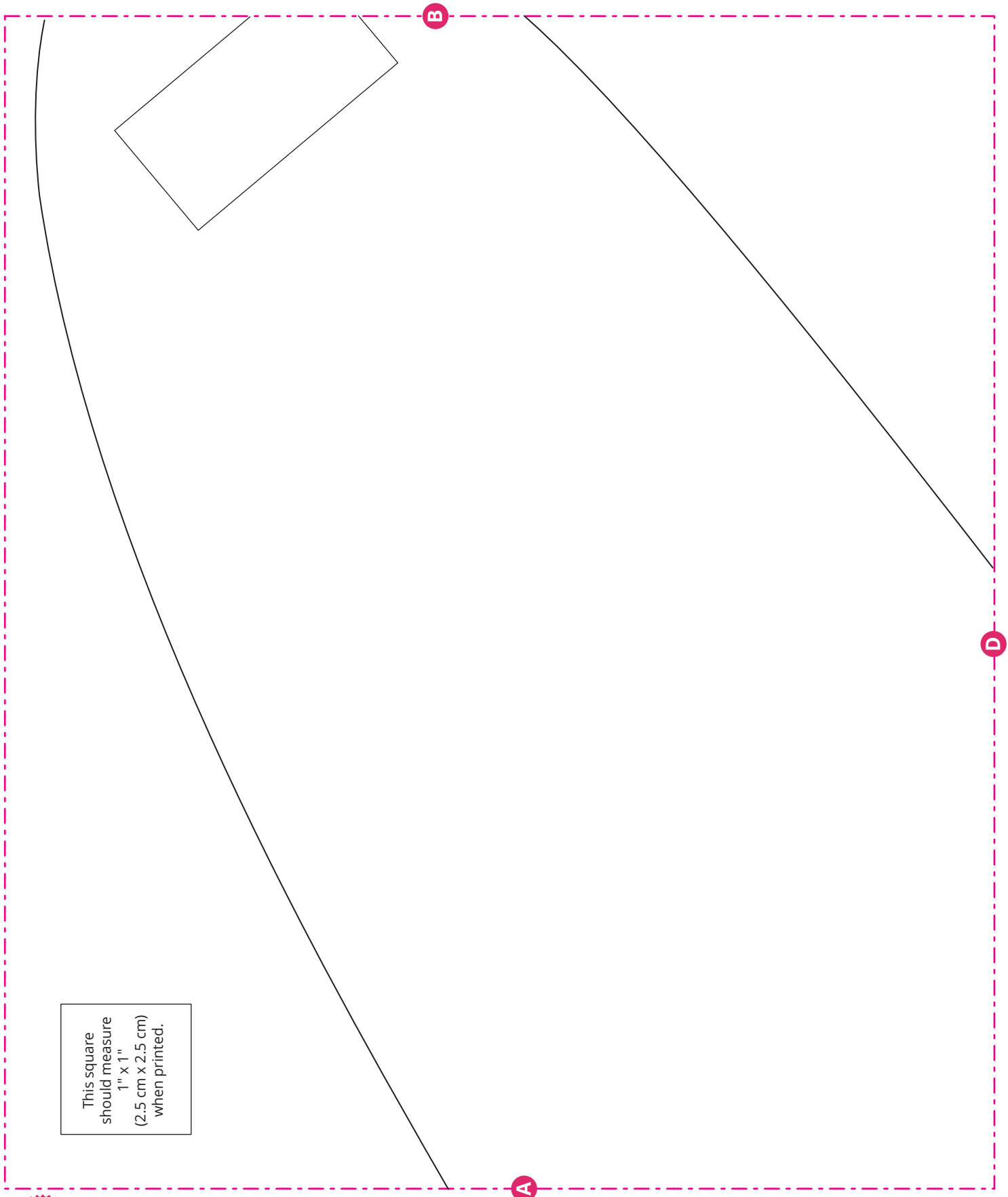


This pattern is owned and licensed by Dear Stella for personal use only  
and should not be reproduced for sale to any third party.

[www.dearstelladesign.com](http://www.dearstelladesign.com)

PAGE 4 OF 12

# SLOTH LOVIE PATTERN

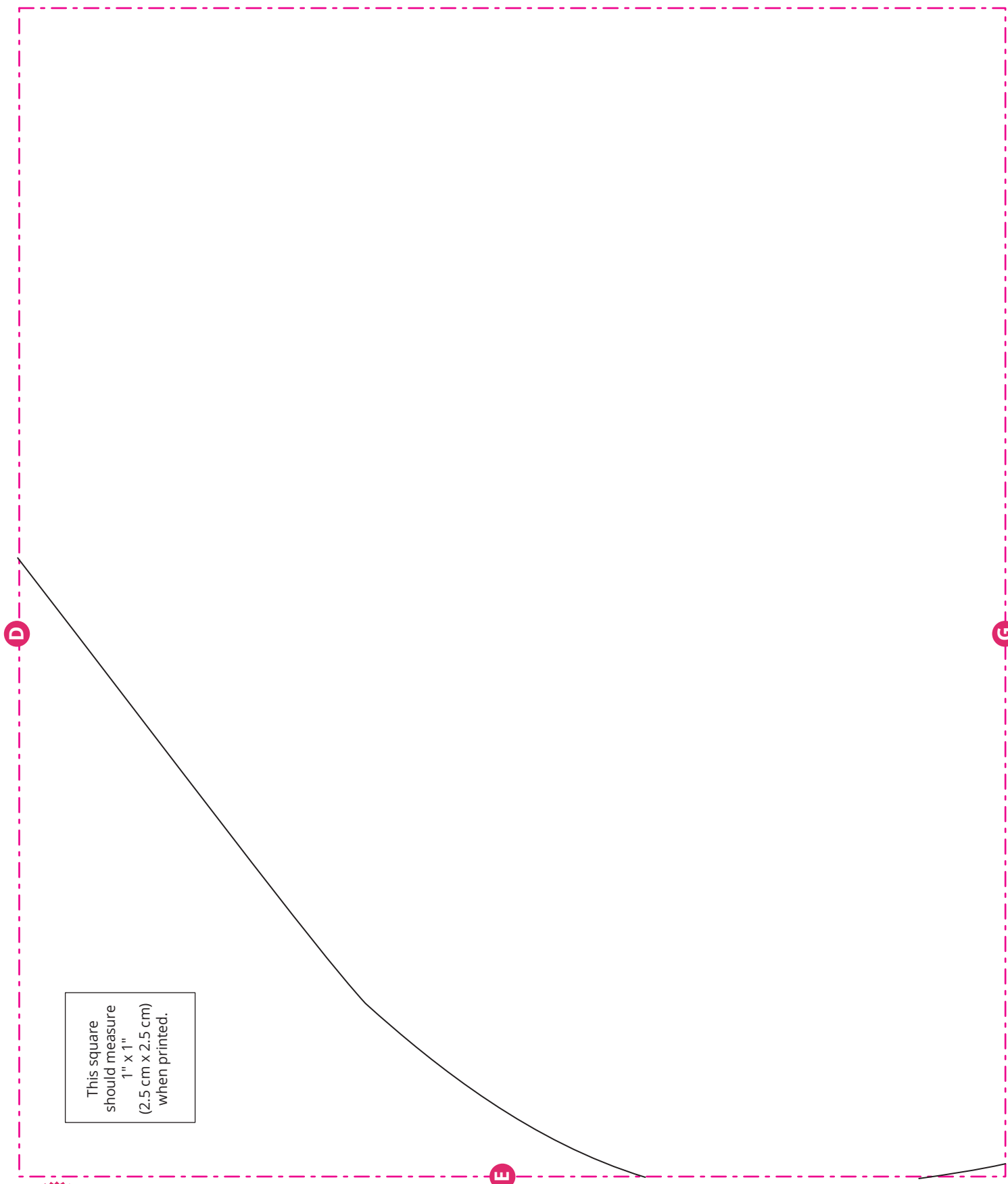


This square  
should measure  
1" x 1"  
(2.5 cm x 2.5 cm)  
when printed.



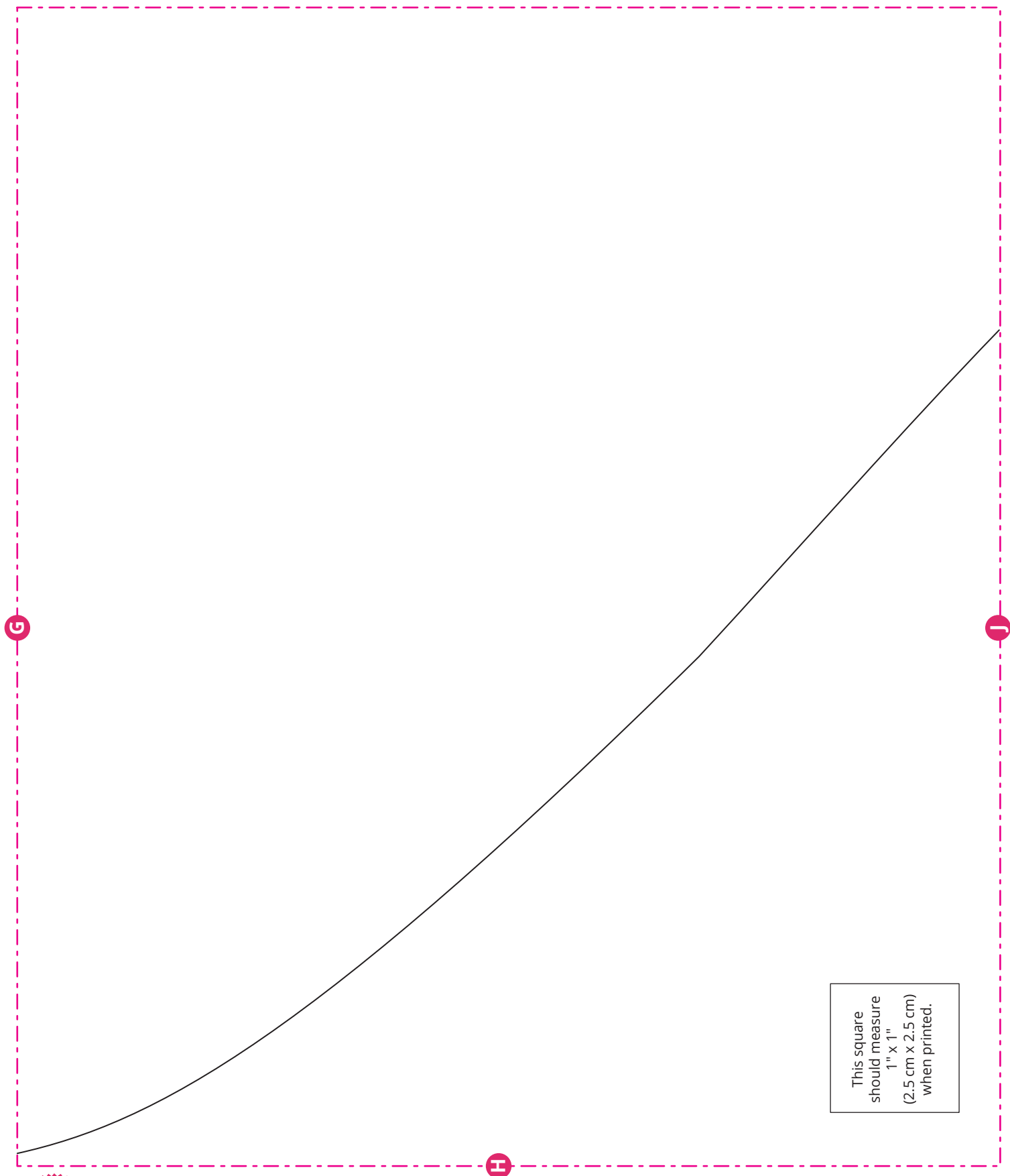
This pattern is owned and licensed by Dear Stella for personal use only and should not be reproduced for sale to any third party.

# SLOTH LOVIE PATTERN



This pattern is owned and licensed by Dear Stella for personal use only and should not be reproduced for sale to any third party.

# SLOTH LOVIE PATTERN

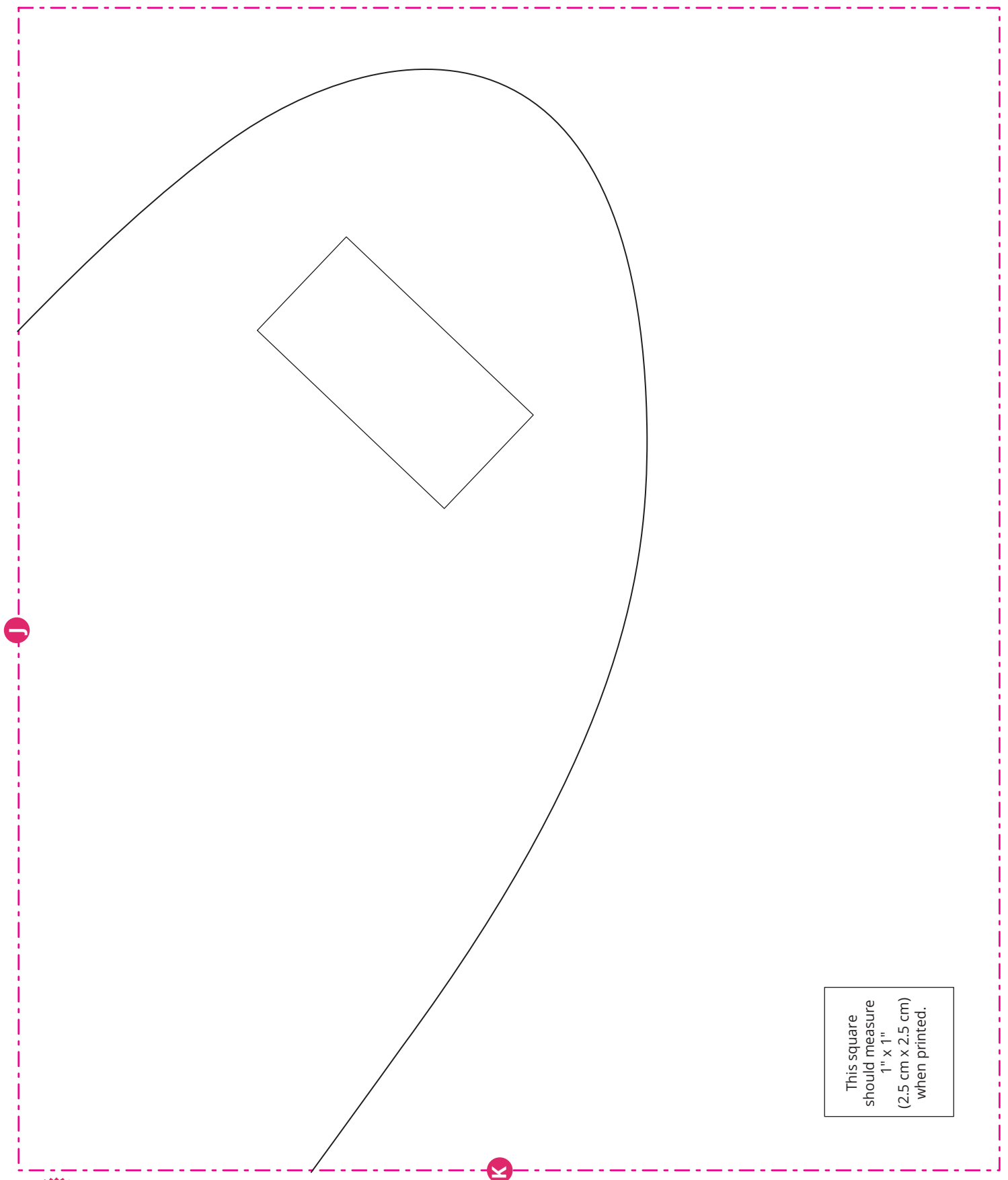


This square  
should measure  
1" x 1"  
(2.5 cm x 2.5 cm)  
when printed.



This pattern is owned and licensed by Dear Stella for personal use only  
and should not be reproduced for sale to any third party.

# SLOTH LOVIE PATTERN



This square  
should measure  
1" x 1"  
(2.5 cm x 2.5 cm)  
when printed.



This pattern is owned and licensed by Dear Stella for personal use only and should not be reproduced for sale to any third party.



# SLOTH LOVIE PATTERN

This square  
should measure  
1" x 1"  
(2.5 cm x 2.5 cm)  
when printed.

A

C



This pattern is owned and licensed by Dear Stella for personal use only  
and should not be reproduced for sale to any third party.

[www.dearstelladesign.com](http://www.dearstelladesign.com)

PAGE 9 OF 12

# SLOTH LOVIE PATTERN

This square  
should measure  
1" x 1"  
(2.5 cm x 2.5 cm)  
when printed.

Sloth Lovie  
Body

Place on fold.



This pattern is owned and licensed by Dear Stella for personal use only  
and should not be reproduced for sale to any third party.

# SLOTH LOVIE PATTERN

H

This square  
should measure  
1" x 1"  
(2.5 cm x 2.5 cm)  
when printed.

F

I



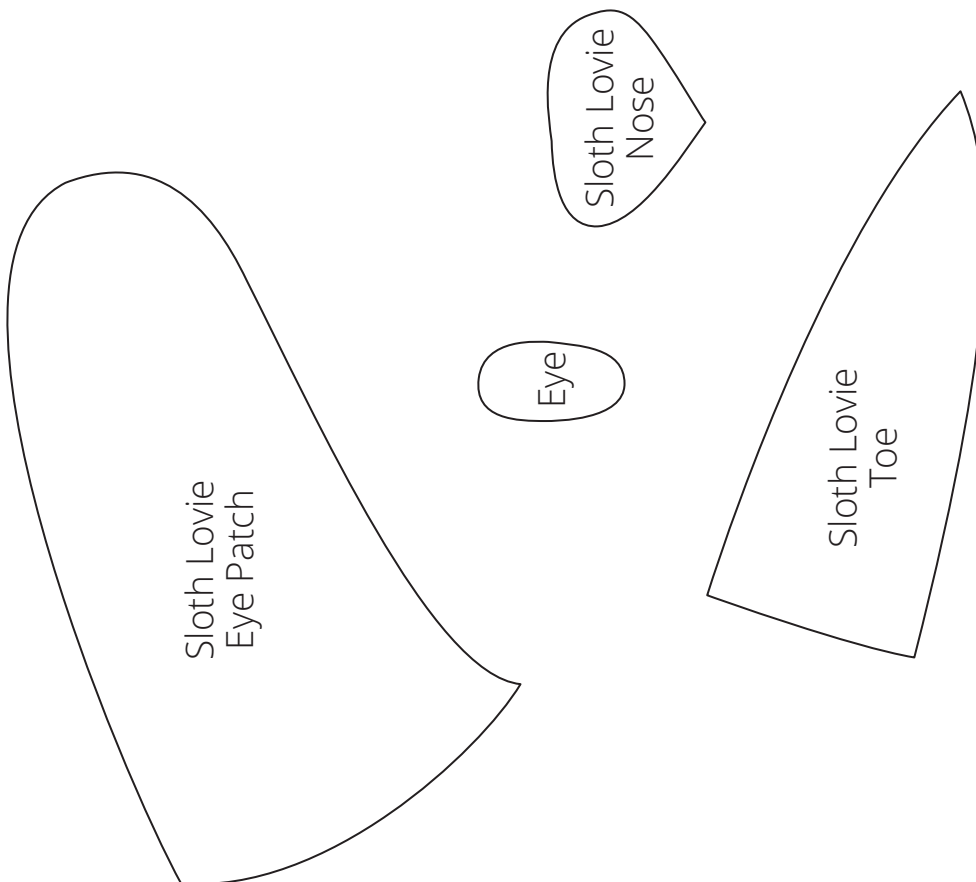
This pattern is owned and licensed by Dear Stella for personal use only  
and should not be reproduced for sale to any third party.

# SLOTH LOVIE PATTERN

K

This square  
should measure  
1" x 1"  
(2.5 cm x 2.5 cm)  
when printed.

I



This pattern is owned and licensed by Dear Stella for personal use only and should not be reproduced for sale to any third party.